

City: Highland Park



Judith Weiner
 Broker Associate
 847-207-3444
 Judith@JudithWeiner.com
 ABR, CRS, e-PRO, GRI, SFR



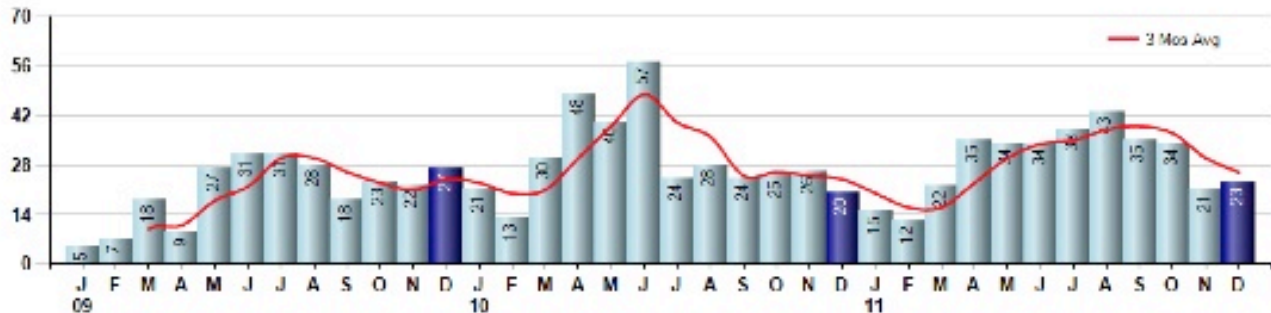
Price Range: ALL | Properties: Single Family Home, Townhome, Condo

Market Profile & Trends Overview	Month	Trending Versus*				YTD	Trending Versus*	
		LM	L3M	PYM	LY		PriorYTD	PriorYear
Median List Price of all Current Listings	\$559,000	2%		2%				
Average List Price of all Current Listings	\$846,918	1%		-11%				
December Median Sales Price	\$270,000	-31%	-34%	-30%	-36%	\$426,250	1%	2%
December Average Sales Price	\$697,139	14%	24%	59%	28%	\$530,105	-4%	-3%
Total Properties Currently for Sale (Inventory)	302	-9%		-17%				
December Number of Properties Sold	23	10%		15%			-3%	
December Average Days on Market (Solds)	140	21%	21%	9%	-1%	125	-10%	-11%
Asking Price per Square Foot (based on New Listings)	\$196	-8%	-4%	-11%	-34%	\$221	-27%	-26%
December Sold Price per Square Foot	\$182	-3%	4%	15%	2%	\$175	-3%	-2%
December Month's Supply of Inventory	13.1	-17%	-1%	-28%	-21%	15.0	-10%	-10%
December Sale Price vs List Price Ratio	83.9%	-2.6%	4%	0%	2.8%	82.6%	1.2%	1.2%

* LM=Last Month / L3M=Last 3 Months / PYM=Same Month Prior Year / LY=Last Year / YTD = Year-to-date

Property Sales

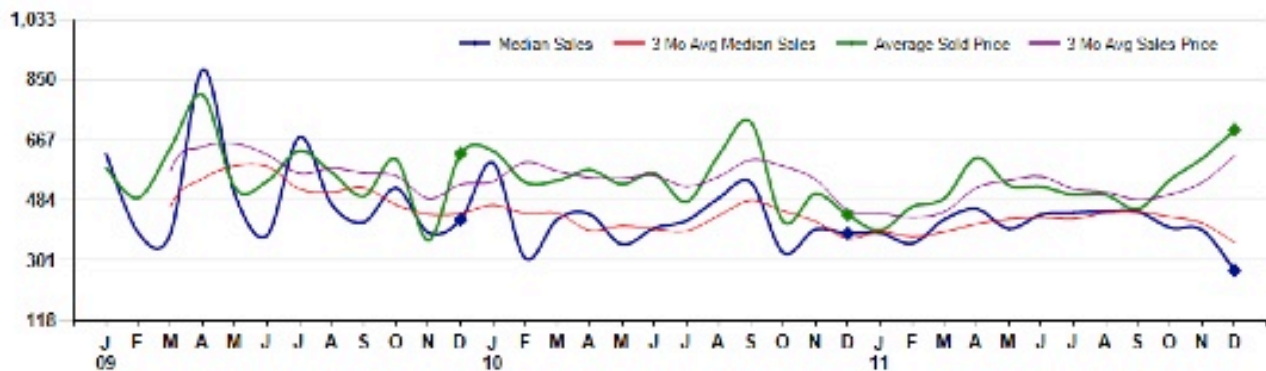
December Property sales were 23, up 15.0% from 20 in December of 2010 and 9.5% higher than the 21 sales last month. December 2011 sales were at a mid level compared to December of 2010 and 2009. December YTD sales of 346 are running -2.8% behind last year's year-to-date sales of 356.



Prices

The Median Sales Price in December was \$270,000, down -29.5% from \$383,000 in December of 2010 and down -31.3% from \$393,000 last month. The Average Sales Price in December was \$697,139, up 58.7% from \$439,275 in December of 2010 and up 14.1% from \$610,829 last month. December 2011 ASP was at highest level compared to December of 2010 and 2009.

Median means Middle (the same # of properties sold above and below Median) (000's)



Based on information from Midwest Real Estate Data LLC for the period 1/1/2009 through 12/31/2011. Due to MLS reporting methods and allowable reporting policy, this data is only informational and may not be completely accurate. Therefore, Coldwell Banker Residential Brokerage does not guarantee the data accuracy. Data maintained by the MLS's may not reflect all real estate activity in the market.

